



SCHOOL OF Clinical Medicine NEWSLETTER

EDITORIAL

Dear Colleagues

A warm welcome to the School of Clinical Medicine in 2020.

I wish you all the best for the year ahead!

Thank you to Professors Smith, Chauke and Janse van Rensburg for holding the fort during my absence.

The School of Clinical Medicine ranked between 51-75 globally during 2019 and we published almost 200 research articles in 2019.

We currently have almost 500 students in our final year program which includes the Cuban Collaboration project and Graduate Entry Medical Programme (GEMP). There are almost 1000 Registrars training to be specialists in a wide range of disciplines. Our School makes a significant contribution to health care in South Africa! May I encourage us to strive towards even greater heights in 2020.

Happy reading!

Please send items that you would like to be included in our next newsletter to Rita Kruger (rita.kruger@wits.ac.za) by **Friday 27 March 2020**.

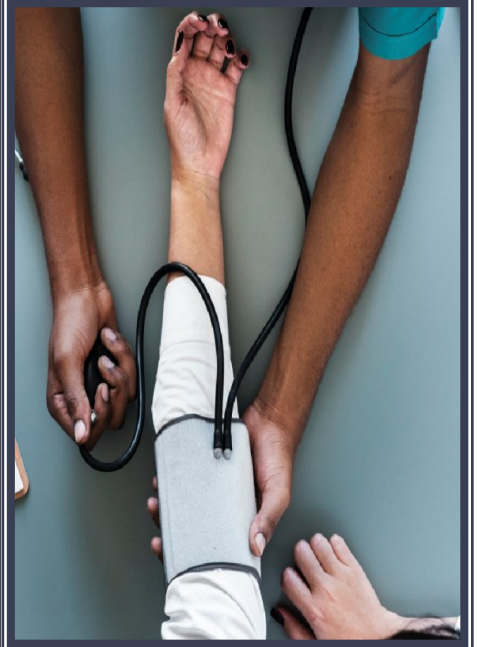
A LOOK AT OUT STAFF ACHIEVEMENTS

Congratulations:

Adjunct Professor Martin Smith for his promotion to Full Professor
Associate Professor Daynia Ballot for her promotion to Full Professor

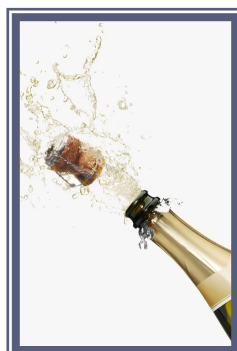
Dr Richard Cooke for his promotion to Adjunct Professor
Dr Mantoa Mokhachane has been appointed as the new UUME Director

Prof Kevin Behrens has been appointed as the new Director for the Steve Biko Centre for Bioethics



INSIDE THIS ISSUE

STAFF ACHIEVEMENTS	1
OTHER STAFF ACHIEVEMENTS	2
2020 SOCM TOWNHALL MEETING WITH STUDENTS	2
WITS JOURNAL OF CLINICAL MEDICINE	2
DR MANTOA MOKHACHANE	3
PROF KEVIN BEHRENS	3
PROF MARTIN SMITH	4
HS TALKS	4
DOTDR	5
DPHRU NEWS	6
WITS STUDENTS' BIOETHICS SOCIETY	7
ENTERPRISE ARCHITECTURE	8
SOCM MEETING DATES 2020	8



OTHER STAFF ACHIEVEMENTS



Congratulations to Professor Frederick Raal! He has been identified as one of the scientists who produces multiple papers ranking in the top 1% citations for their field and year of publication. The 2019 lists includes a pool of 23 Nobel laureates and 57 Citation laure-

ates among 6,216 researchers in various fields.

Well done to our Researchers! Wits University is among the top 10 institutions globally for HIV/AIDS Research. The Elsevier report was released in December 2019 in anticipation of World Aids Day. For the full article: <https://www.elsevier.com/connect/new-elsevier-report-charts-global-trends-in-hivaids-research>

Welcome to:

Honorary and Visiting Staff

Dr Eric Klug as Honorary Associate Professor

Prof Pravin Manga as Visiting Professor
Prof George Hofmeyr as Visiting Professor

Ms Penelope Mekgwe as Honorary Researcher

Dr Daniel Miller as Honorary Researcher

Dr Lucas Hermanus as Honorary Researcher

Prof Rita Thom as Honorary Adjunct Professor

Prof Sarala Naicker as Chair for the School GSC committee

Dr Meera Ooka as Honorary Lecturer

SCHOOL OF CLINICAL MEDICINE TOWNHALL MEETING WITH STUDENTS

Dear Students

You are invited to the Townhall meeting with the Dean (Prof Veller), the Assistant Dean of Teaching and Learning (Prof Bruce) and the Head of School (Prof Daynia Ballot) as part of the Faculty's ongoing commitment to facilitating communication with students.

Date: **18 March 2020**

Time: 12:00

Venue: Lecture Theatre 2, 5th Floor, Medical School

Please send any issues you wish to be discussed to Rita Kruger at

Rita.Kruger@wits.ac.za by Monday 16 March 2020

Date: **23 September 2020**

Time: 12:00

Venue: Lecture Theatre 4, 5th Floor, Medical School

Please send any issues you wish to be discussed to Rita Kruger at

Rita.Kruger@wits.ac.za by Monday 21 September 2020.

WITS JOURNAL OF CLINICAL MEDICINE

The Wits Journal of Clinical Medicine is a peer-reviewed, Open Access scientific research journal published triennially, and was established to provide a forum to showcase scientific research from the School of Clinical Medicine at the University of Witwatersrand, Johannesburg as well as from other institutions nationally and internationally.

Submissions are welcomed and the journal has a particular focus to encourage clinical and translational research especially from new academics, including students, registrars, fellows and junior consultants.

The Wits Journal of Clinical Medicine also provides a space where the various Departmental Research Day abstracts

can be shared.

WJCM publishes original papers, review papers, case reports and letters to the editor. WJCM is inviting papers for Vol. 2 No. 2 which is scheduled to be published in July 2020. Last date of Submission: 30 April 2020. Early submission will get preference.

Send your manuscript to:

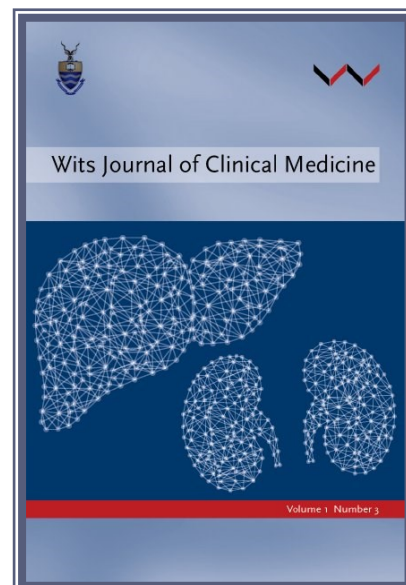
rita.kruger@wits.ac.za

For more information, visit the official website of the journal: <https://journals.co.za/content/journal/wjcm>

Please click here to sign up for direct alerts on new articles and issues:

<https://journals.co.za/registration/personal>

Prof Pravin Manga
(Editor)



DR MANTOA MOKHACHANE—DIRECTOR OF THE UNIT FOR UNDER-GRADUATE MEDICAL EDUCATION (UUME)



Dr Mokhachane is a Paediatric Specialist with a particular passion for bioethics and is currently registered for her PhD in Health Science Education. She obtained her Post-

graduate Diploma in Health Sciences Education in 2016, Bachelor of Medicine and Surgery (MBBCh) in 1998, Fellow of the College of Medicine (FCP.Paed.SA) in 1994, and MMed (Paediatrics) at the University of Witwatersrand in 1999.

She went on to join the Neonatal unit at the Chris Hani Baragwanath Hospital in Soweto. There she witnessed first-hand the many human rights atrocities experienced by her fellow South Africans.

The recognition of these issues motivated her to become a member of the National Medical Research

Council Ethics Committee and the Ethics Committee of Research on Human Subjects at Wits.

It is this passion for delivering ethical and humane health care that led her to UUME in 2015, where she began lecturing the GEMP I and GEMP II students. Ensuring that the next generation of health care practitioners are not only educated to the highest standards, but that they are equipped with the tools to provide an ethical and humane service to their clients, became her top priority.

Dr Mokhachane has supervised postgraduate students, authored numerous publications and served on a host of committees.

She is also the recipient of the Fogarty Foundation Scholarship in Ethics from Johns Hopkins University.

We wish her well on this appointment!

PROFESSOR KEVIN BEHRENS—STEVE BIKO CENTRE FOR BIOETHICS

Associate Professor Kevin Behrens holds a doctorate in Public Philosophy and Ethics from the University of Johannesburg and a Masters in Applied Ethics for Professionals from Wits.

He has also been awarded the Postgraduate Diploma in Health Sciences by Wits.

He holds an C1 (established researcher) National Research Foundation rating.

His research interests lie in the area of Applied Ethics, in particular in Bioethics and Environmental Ethics. A major emphasis in his work is on applying sub-Saharan African moral philosophical notions to ethical questions.

He has published widely in international and national journals, including the *Journal of Medical Ethics*, *Theoretical Medicine and Bioethics*, *Environmental Ethics* and *Environmental Values*.

He was the editor-in-chief of the *African Jour-*

nal of Business Ethics for the period 2018-19.

Prof Behrens has been the head of the PhD programme at the Steve Biko Centre for Bioethics since 2012.

He is also the unit head for the Foundations of Bioethics unit of the MSc (Med) in Bioethics and Health Law and teaches on the Centre's honours and undergraduate programmes.

Prof Behrens is deeply committed to the Africanisation of the teaching curriculum and has made it a priority to mainstream African ethics into the teaching programme at the Steve Biko Centre.

He was appointed as a bioethics advisor to the Clinical Expert Advisory Panel of



the *South African Council of Medical Schemes* for the period 2018-2021 and is a member of the Research Ethics Committee of the *Council for Scientific and Industrial Research*.

We wish him well on this appointment!

PROFESSOR MARTIN SMITH



Congratulations to Adjunct Professor Martin Smith with his promotion to Full Professor.

He completed his undergraduate degree at the University of the Witwatersrand, Johannesburg and graduated in 1982.

His surgical training was completed at the same University and he graduated as a Fellow of the College of Surgeons in

1991 and was registered as a Surgical Gastroenterologist (HPB) in 1997.

In 2001 he was appointed as the Head of Surgery at Chris Hani Baragwanath Academic Hospital (CHBAH). He is the Head of the Hepato Pancreatic Biliary Surgery unit at CHBAH. In 2013 he was appointed as the Academic Head and Chairman of the University Department

of Surgery a position he still currently hold.

He was the President of the Pan African Association of Surgeons from 2012–2014. He was the President of the E-AHPBA from 2015–2017. Prof Smith served as the Secretary General Elect for the International HepatoPancreatoBiliary Association 2012–2014 and as the acting Secretary General from 2014–2016. He is currently the President of the IHPBA (2018–2020).

In 2020 he was awarded a Fellowship ad hominem from the Royal College of Surgeons of Edinburgh.

His research interests include Chronic Pancreatitis and Pancreatic cancer. He is actively involved in Global Surgery initiatives and research which serve to improve access to quality surgical care especially in low and middle-income countries.

He has over 48 publications, 11 book chapters and have delivered more than 50 invited lectures nationally and internationally.

THE BIOMEDICAL & LIFE SCIENCES COLLECTION (HS TALKS)

In 2019, the School of Clinical Medicine has acquired a license for HS Talks Biomedical and Life Sciences Collection.

The Collection consists of over 2,500 talks on topics in Clinical Medicine and the Biomedical and Life Sciences from leading experts in their fields. You can view the Collection at www.hstalks.com.

You can currently access the Collection when you are on the Wits network or via the Library Libguides.

The Talks are great for senior undergraduate or postgraduate students and researchers and a number of introductory series on topics such as biochemistry have been added to the Collection.

You can also use the talks in your teaching – either directing the students to an entire talk or embedding part of a talk in your own lecture or as an online resource.

We encourage you to browse through the collection and circulate the link to your students. If you're interested in including talks in your own teaching but aren't sure where to start looking, HS talks also offers a Talk Matching Service

in which content specialists can recommend talks that could be relevant to your teaching.



DotDr

Workplace based Assessment (WBA) is a strategy which provides tools for assessing clinical skills and practice objectively, within the workplace. Its real value lies in the provision of feedback on student performance, which creates an educational culture of both assessment **for** learning as well as assessment **of** learning. Regular WBA with many different teachers, in low stakes engagements, is then able to provide a holistic picture of a student's competence and progression through the training programme.

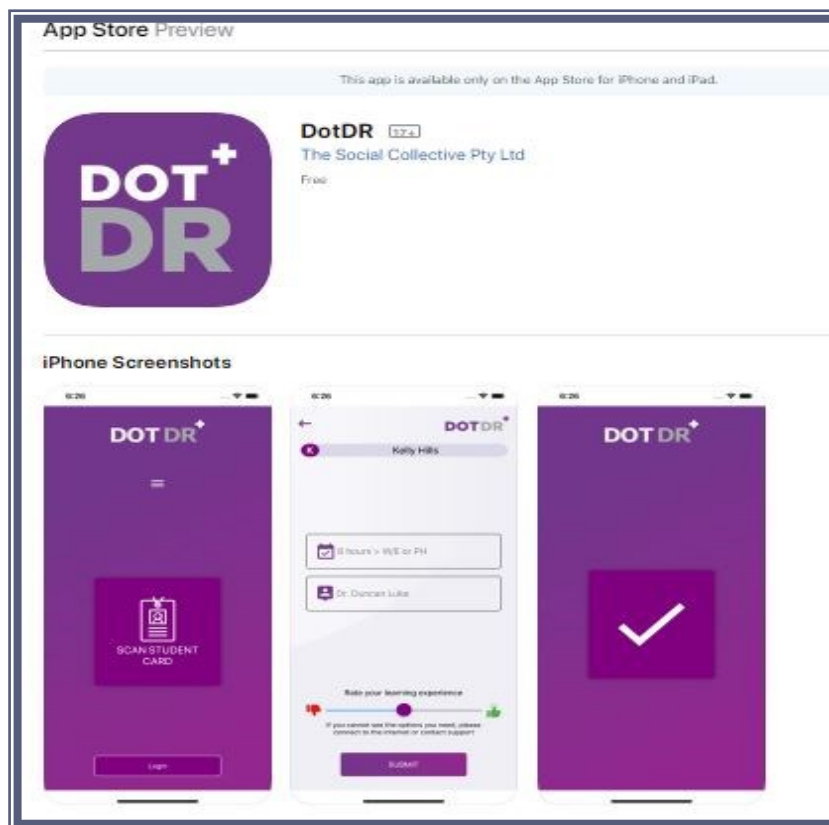
As part of developing the Workplace Based Assessment (WBA) process in the undergraduate medical programme, the School of Clinical Medicine has invested in the development of a mobile and web-based app called DotDr.

This app functions as an electronic log-book, and also provides clinicians with various WBA tools with which to engage with students on the clinical platform – giving them the means to easily and quickly monitor attendance, and assess students in different domains of patient interaction (e.g. clerking and presenting patients, performing skills and procedures, etc) and professionalism.

The SOCM and UUME, in close collaboration with the Academic HODs and undergraduate coordinators of various departments involved in teaching GEMP students, is rolling out the use of DotDr for GEMP 3/MBBCh 5 in 2020.

As such, we request that *all clinicians involved in the training of undergraduate medical students* (particularly GEMP 3) please download the DotDr app and complete the certification training process as described below.

The certification will be supported by specific in-person training in the use of workplace-based assessments during



2020, within a broader strategy of faculty development.

To get started:

Step 1 – Download the app

The app is available for android and iOS devices, and can be found on your app store using the following links:

Android: https://play.google.com/store/apps/details?id=com.TheSocialCollective.DotDr.Mobile&hl=en_US

Apple: <https://apps.apple.com/za/app/dotdr/id1477636655>

Step 2: Register your account

Please note that all clinicians who register an account with DotDr must be validated as an authentic user – please email your HOD to request confirmation of your status as a clinician in the department, and cc in Ms Nonhlanhla Sefatsa (Nonhlanhla.sefatsa1@wits.ac.za) to facilitate this process.

Once validated with DotDr, you will receive an email with your login details which you

can then use to access and utilize the mobile app.

Step 3: Complete the Certification Training

Please complete the self-led training and certification process (which should take only 5-10 minutes) by clicking on the following link:

https://docs.google.com/forms/d/e/1FAIpQLSe3n02LyNDjkCQO_sH8Y-3kZp4_HPHW5j00MkPgZZpBtOWUqg/viewform

For any queries or technical issues that you require assistance with, please email: hel-lo@dotdr.co.za

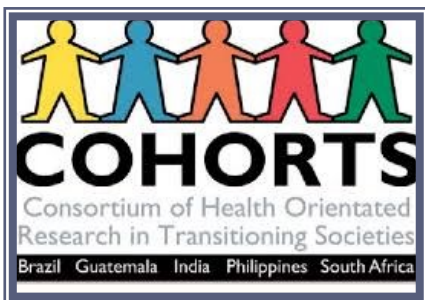
We thank you for your cooperation in this exciting and innovative initiative!

If you require any further information, feel free to contact your departmental undergraduate coordinator and/or Academic HOD.

Alternatively you are also welcome to contact me directly.

Dr Lori Bocchino
Loredana.Bocchino@wits.ac.za

WITS DEVELOPMENTAL PATHWAYS FOR HEALTH RESEARCH UNIT (DPHRU) NEWS



The MRC-Wits Developmental Pathways for Health Research Unit (DPHRU) and the DSI-NRF Centre of Excellence in Human Development were the hosts of the '2019 Consortium of Health-Orientated Research in Transitioning Societies (COHORTS)' meeting which took place in

the Faculty of Health Sciences at Wits University in early November 2019.

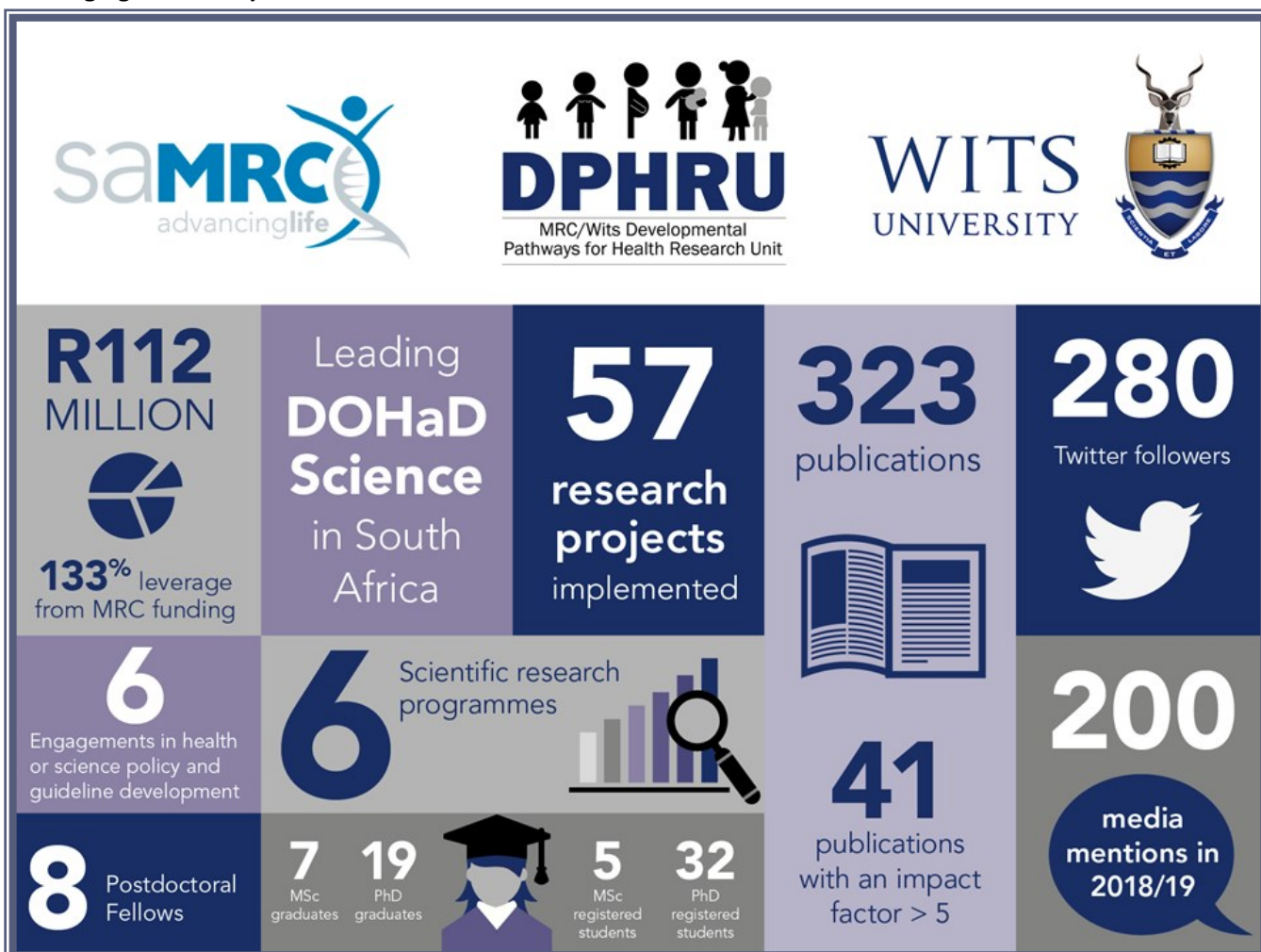
DPHRU's **Birth to Twenty Plus** cohort study is a member of COHORTS. At the meeting, health researchers from the global South gathered to present and discuss their findings on health and development in their respective countries.

Surprising and consistent findings across the studies revealed that stunting is not the chief predictor of later adult cognitive functioning, but rather of the IQ levels of children on their first day of formal primary schooling.

The meeting included a public seminar in the Adler Museum. Besides other Wits researchers, participants included policymakers from the Department of Science and Innovation (DSI), the National Research Foundation (NRF), and the Medical Research Council (MRC). Leaders from the various cohort studies presented the findings from the latest COHORTS data round, highlighted the value and critical relevance of the five different cohort studies in their respective countries, and made recommendations about future research foci.

FIVE YEAR REVIEW OF THE MRC-WITS DEVELOPMENTAL PATHWAYS TO HEALTH RESEARCH UNIT

In November 2019 the SAMRC completed its five year review of the MRC-Wits Developmental Pathways to Health Research Unit. The SAMRC has approved DPHRU as an SAMRC Extramural Unit for a further five year period. In the infographic below are some highlights from the years 2015–2019:



WITS STUDENTS' BIOETHICS SOCIETY (WSBS)

The WSBS is committed to student engagement in real-life bioethical issues and broad themes of activism and advocacy. We hosted multiple events in 2019 which speak to this commitment. Here is a quick look at some of the work the 2019/2020 WSBS committee has done so far.

WSBS Bedtime Reading Initiative

The Wits Students' Bioethics Society engages with important social welfare initiatives outside of activism. During the week of 22-26 July 2019, WSBS ventured into a bedtime reading initiative at Charlotte Maxeke Hospital's paediatric wards as a way to confront the issue of low literacy particularly faced by children in South Africa. South Africa has one of the lowest literacy rates in the world and in addition to this, 50% of children have never read a book with their parents ([Parent24, 2019](#)). This bedtime reading initiative aimed to mitigate this statistic and allow more children access to literacy forms.

The WSBS would like to continue this initiative by donating a sound system for audiobooks to be played in all three paediatric wards of Charlotte Maxeke Hospital. We hope that through sponsors we can gain the necessary funds for the equipment to be purchased and installed. Through this project, the WSBS members feel that we can continue giving children a chance to listen to a story before bedtime.

WSBS Debate: Should mental illness be de-medicalised?

On the 21st of August 2019, the Wits Students Bioethics Society hosted the Wits Debating Union for a debate on the following motion: This House Would De-medicalise Mental Illness. In the spirit of student body collaboration, driven by the bioethical agenda to have nuanced dis-

cussions on how to provide the best possible care for affected people, this event dissected the unique paradox of mental illness characterized by under-recognition and over-treatment. The debate explored issues such as the failures of institutionalization, physiological and systemic iatrogenesis, and the role of allopathic medicine in providing a medium for patients to express, validate and treat their pain.

Whilst honoring the art of public speaking with sound reasoning, evidence and context, the audience was opened up to a broader conversation about how to balance a holistic approach to treating mental illness, with one that affirms its aetiology - ultimately in a way that is not disempowering to sufferers.

WSBS SEXuality Panel Discussion

As an official event on the Wits Pride Week Roster, the **SEXuality Panel Discussion** was hosted by WSBS on August 26th. Our panel comprised of Dr T (Dr. Tlaleng Mofokeng), Phumlani Kango, Mx. Tish Lumos, and Roché Kester - all of whom contributed significantly to a dynamic conversation of sex positivity and sexual health in the LGBTQI+ community. The (very large) audience present was left more enlightened on the Ten81 Clinic, PRoP, and the correlation of queerness and mental health adversity. This event explored issues such as the lack of sexEd in schools and the lack of inclusivity of genderqueer folk in sex positivity conversations. Three fundamental principles transpired: where there are barriers (to access or inclusion), we ought to break them down; intersectionality is a crucial tool in navigating vulnerability of subcommunities within the LGBTQI+ community; as long as consent functions as a parameter to the discussion, sex positivity has the power to be liberating. Bioethics has clear relevance to the issues of self-determination and bodily autonomy, especially within the context of historically and presently marginalised queer communities. Convening this discussion on Med Campus during the first Pride Week this campus celebrated, was revolutionary, to say the least.

WSBS Panel- Health: A body type?

In September 2019 the WSBS hosted a panel which aimed to explore a critically important yet rarely discussed topic: the treatment of fat bodies in the healthcare sector. The event, titled **Health: A Body Type?**, featured three incredibly accomplished speakers: Pontsho Pilane, award-



WSBS members at the debate titled: Should mental illness be de-medicalised?

winning health journalist; Whitney Greyton, fat positivity activist; and Dr Thandokuhle Mngqibisa, obstetrician and poet.

Many subjects were discussed, beginning with the fatphobia entrenched in countless social institutions. Most notably addressed was the bias held by doctors and its sometimes life-threatening consequences, specifically in reference to misdiagnosing fat bodies based solely on the healthcare worker's preconceptions. This in itself directly relates to another question of whether this bias is justified or scientifically supported. Dr Mngqibisa responded, speaking of 1) the flawed nature of scientific methods used to correlate weight and health, such as the BMI, and 2) the existence of weight as a risk factor - far from being the cause - of certain diseases, as is often overlooked - when connecting the two.

By hosting this panel we believe that the audience emerged enlightened and better educated, both as healthcare workers in treating all patients with dignity and neutrality, and as members of society, in learning to dismantle fatphobia in our everyday lives.

Should you wish to join or contribute to our society, please contact us via social media or email:

Facebook: [Wits Students' Bioethics Society](#)
Instagram: [@wits_bioethics](#)
Twitter: [@BioethicsSoc](#)
Email: executive.wsbs@gmail.com



Speakers Pontsho Pilane, Whitney Greyton and Dr Thandokuhle Mngqibisa actively educating the audience on healthcare stereotypes regarding fatphobia.



WSBS members and volunteers during the successful reading initiative week at Charlotte Maxeke Hospital.

ENTERPRISE ARCHITECTURE (EA)

EA is a comprehensive operational framework that explores all of an organization's functional areas while defining how technology benefits and serves the organization's overall mission.

The goal of Enterprise Architecture is to create a unified IT environment (standardized hardware and software

systems) across the university.

EA is guided by the organization's business requirements – it helps lay out how information, business and technology flow together.

This has become a priority for businesses that are trying to keep up with new technologies such as the cloud, Internet of

Things(IoT), machine learning and other emerging trends that will prompt digital transformation. For any further information kindly contact:

Michael.Phinda@wits.ac.za.

Mr Michael Phinda
Senior Solution Architecture,
Wits ICT - Architecture

SOCM MEETING DATES FOR 2020

SOCM EXCO Committee meeting

Date	Time	Venue
25/03/2020	13h00	PPS Boardroom
27/05/2020	13h00	PPS Boardroom
22/07/2020	1300	PPS Boardroom
16/09/2020	13h00	PPS Boardroom
18/11/2020	13h00	PPS Boardroom

SOCM HR & Finance Committee Meetings

Date	Time	Venue
25/03/2020	10h30	PPS Boardroom
15/04/2020	10h30	PPS Boardroom
13/05/2020	10h30	PPS Boardroom
17/06/2020	10h30	PPS Boardroom
22/07/2020	10h30	PPS Boardroom
26/08/2020	10h30	PPS Boardroom
16/09/2020	10h30	PPS Boardroom
14/10/2020	10h30	PPS Boardroom
18/11/2020	10h30	PPS Boardroom

SOCM Transformation Committee Meetings

Date	Time	Venue
14/05/2020	14h00	SOCM meeting room
27/08/2020	14h00	UUME Board room
05/11/2020	14h00	SOCM meeting room

SUBMISSION OF CONTENT

The newsletter will be published bimonthly and we welcome all content, staff (academic & professional) achievements, profiles, and student events and achievements. Photos are always welcome. Should you wish to submit any content for publication, kindly send it to: Rita.Kruger@wits.ac.za (Please note that due to space restrictions content may be edited)